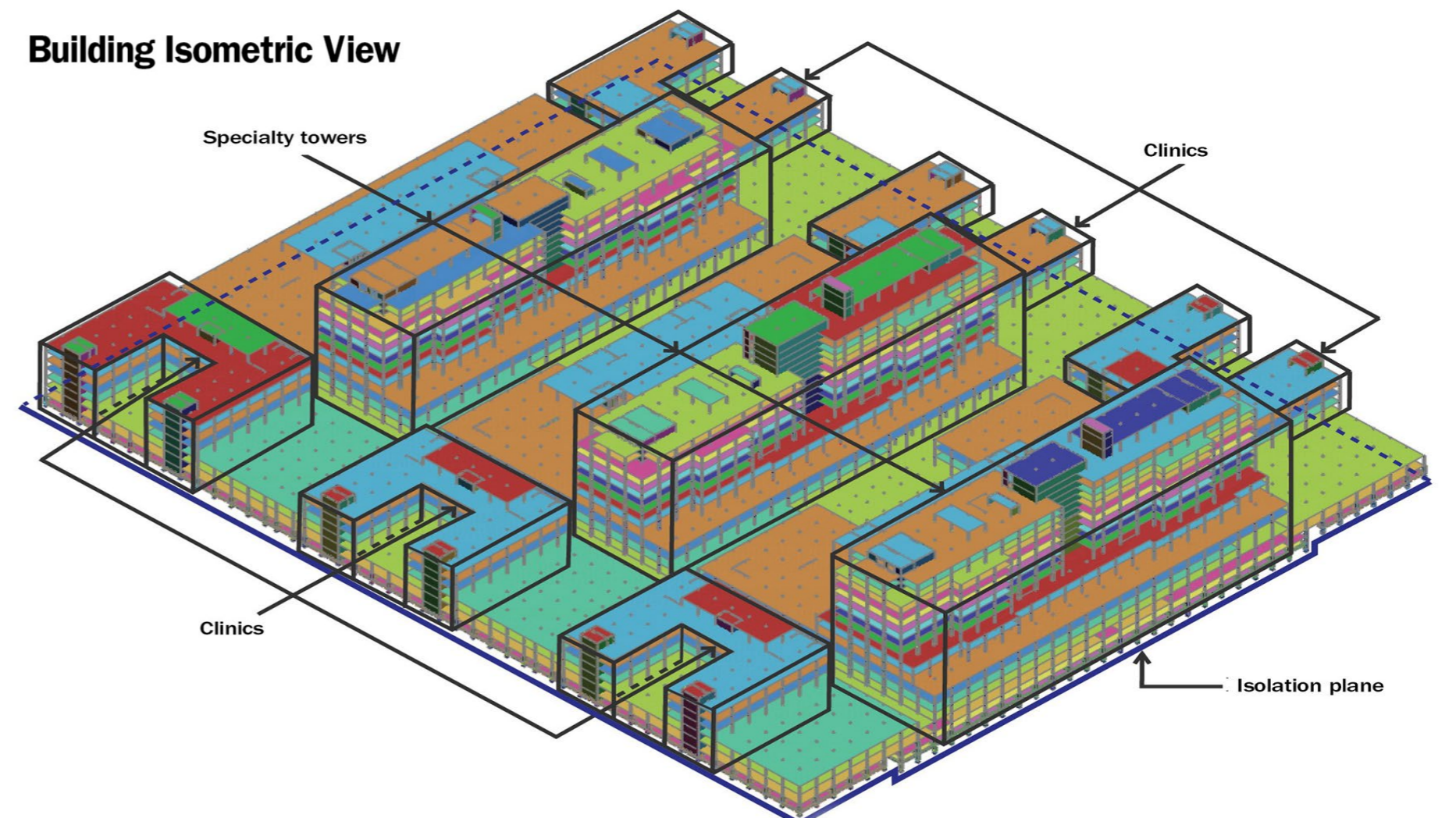
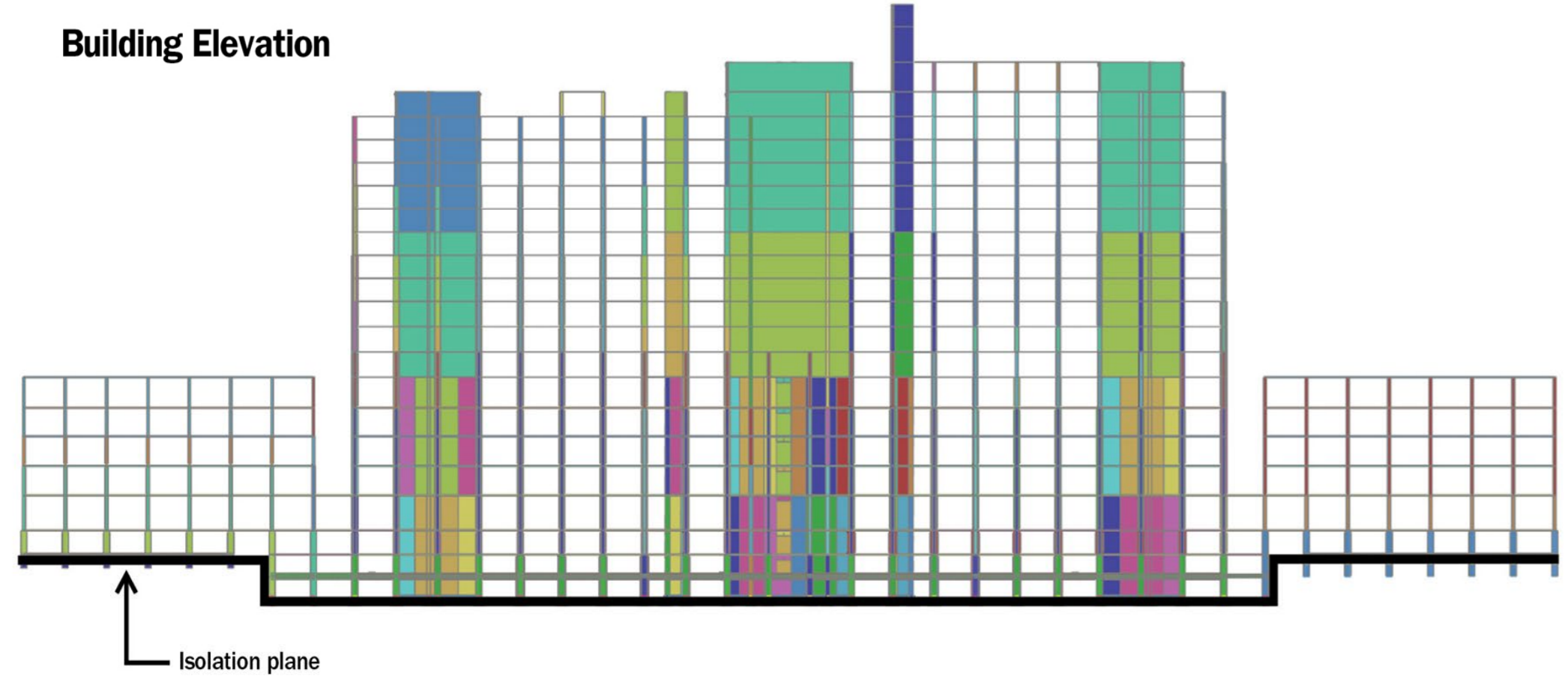
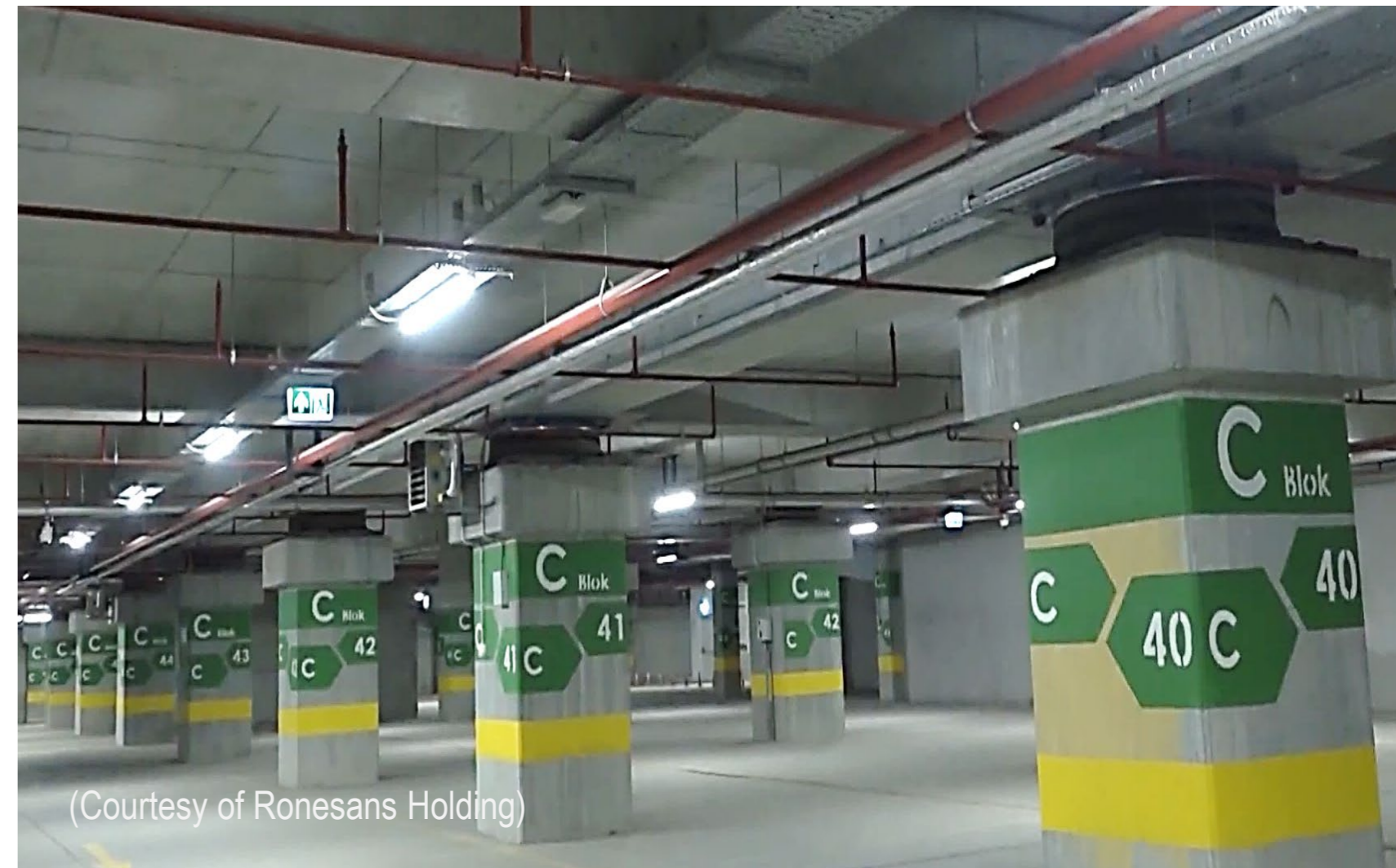


Basaksehir Health Campus Istanbul, Turkey

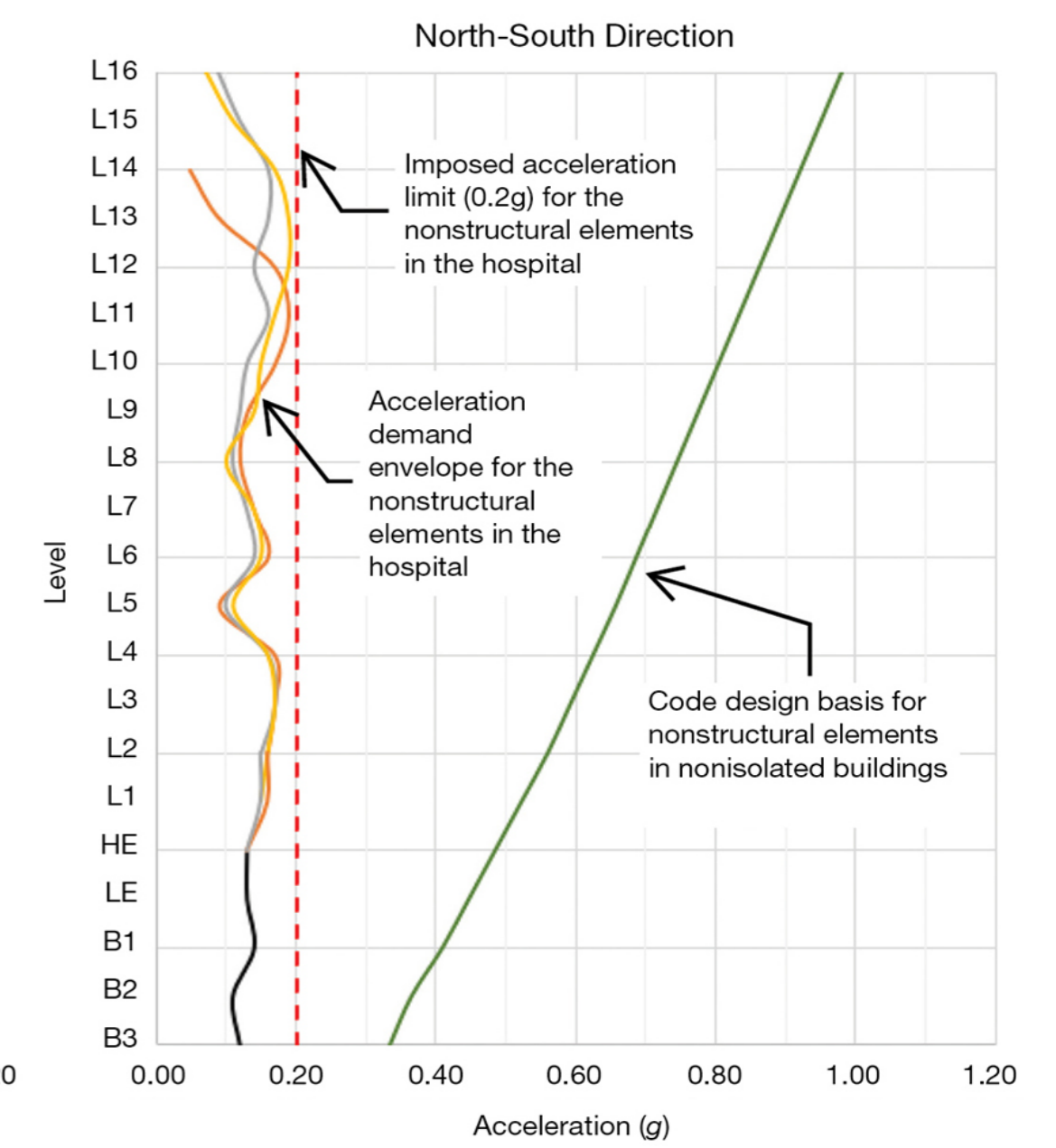
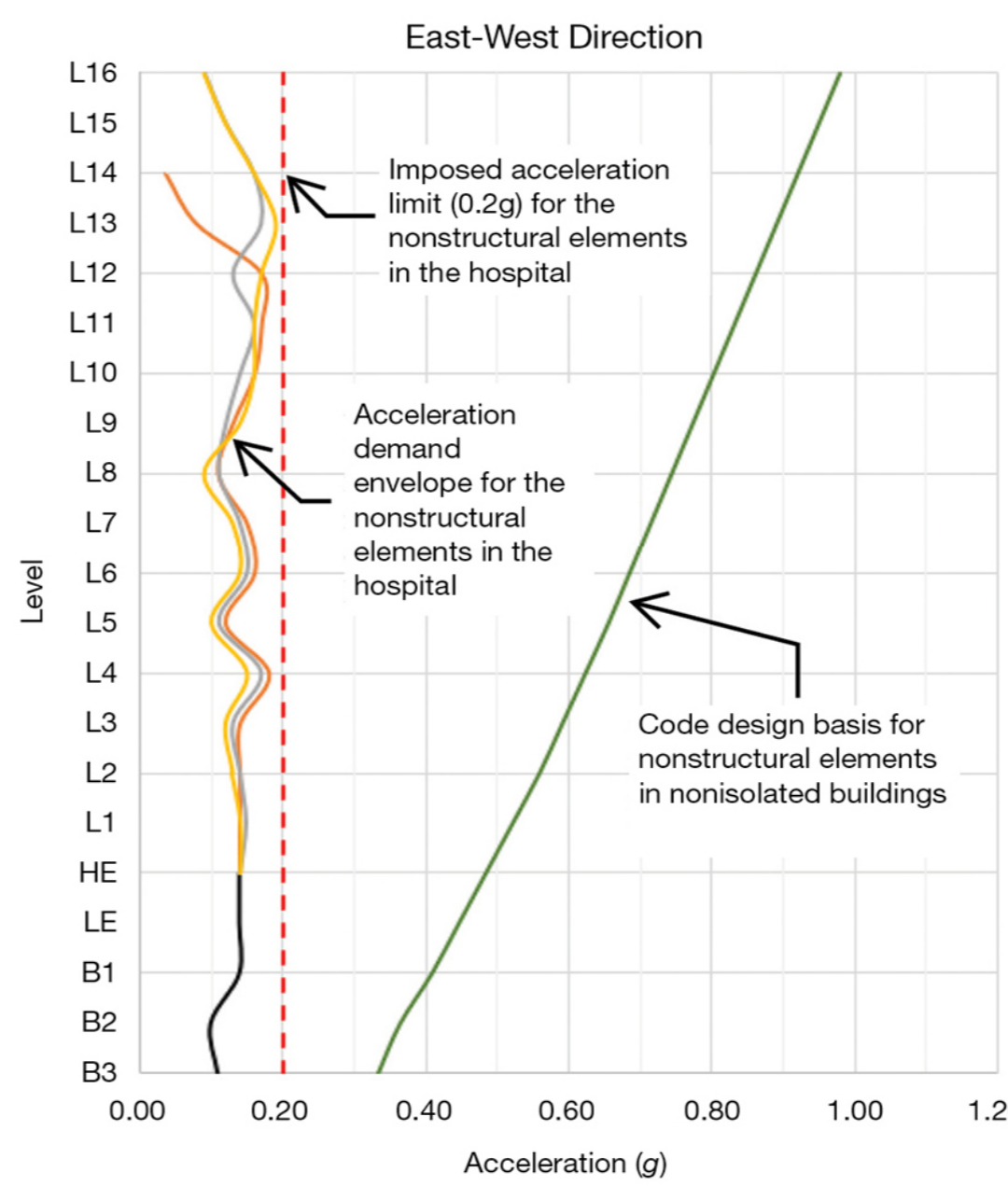
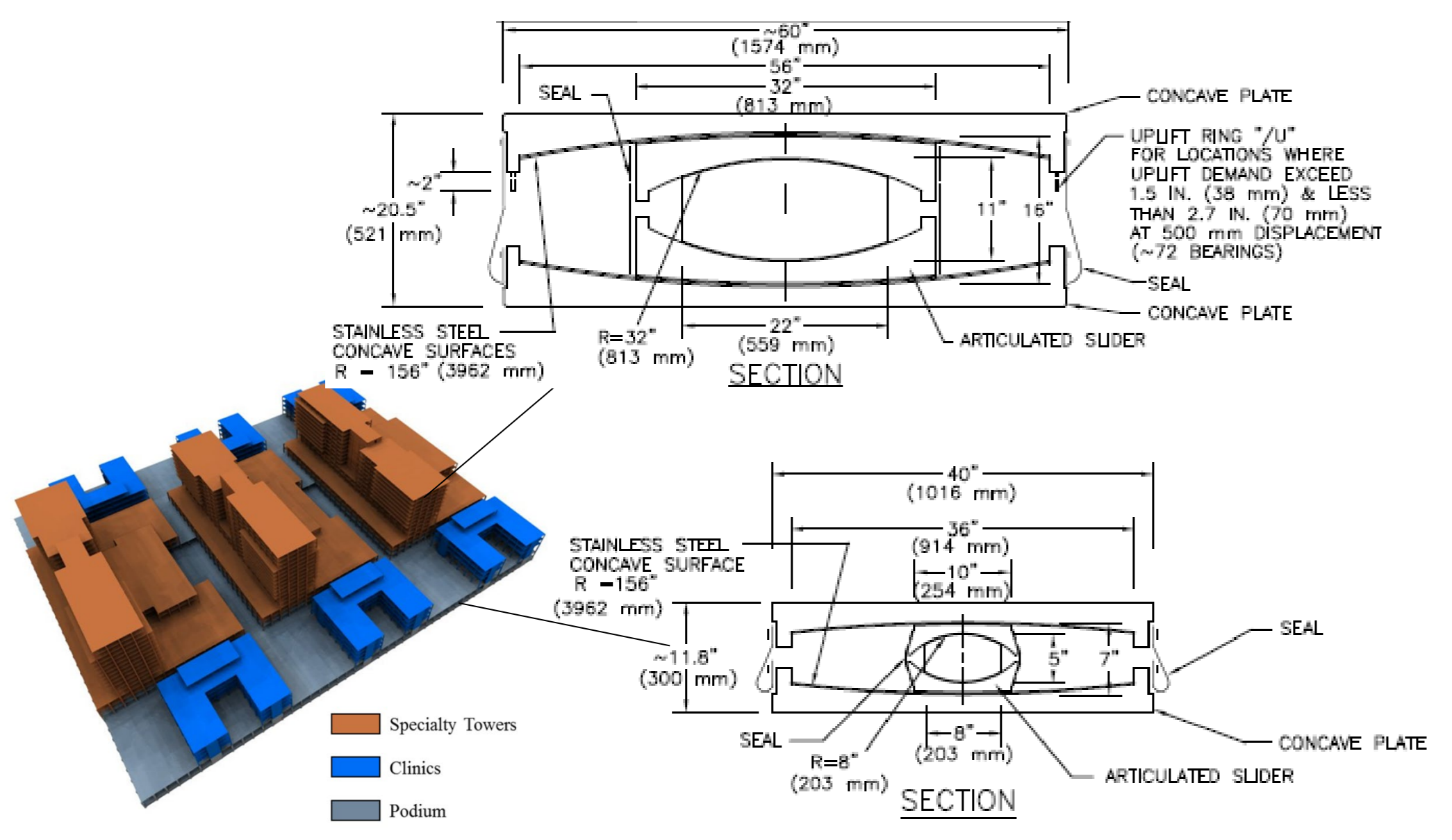
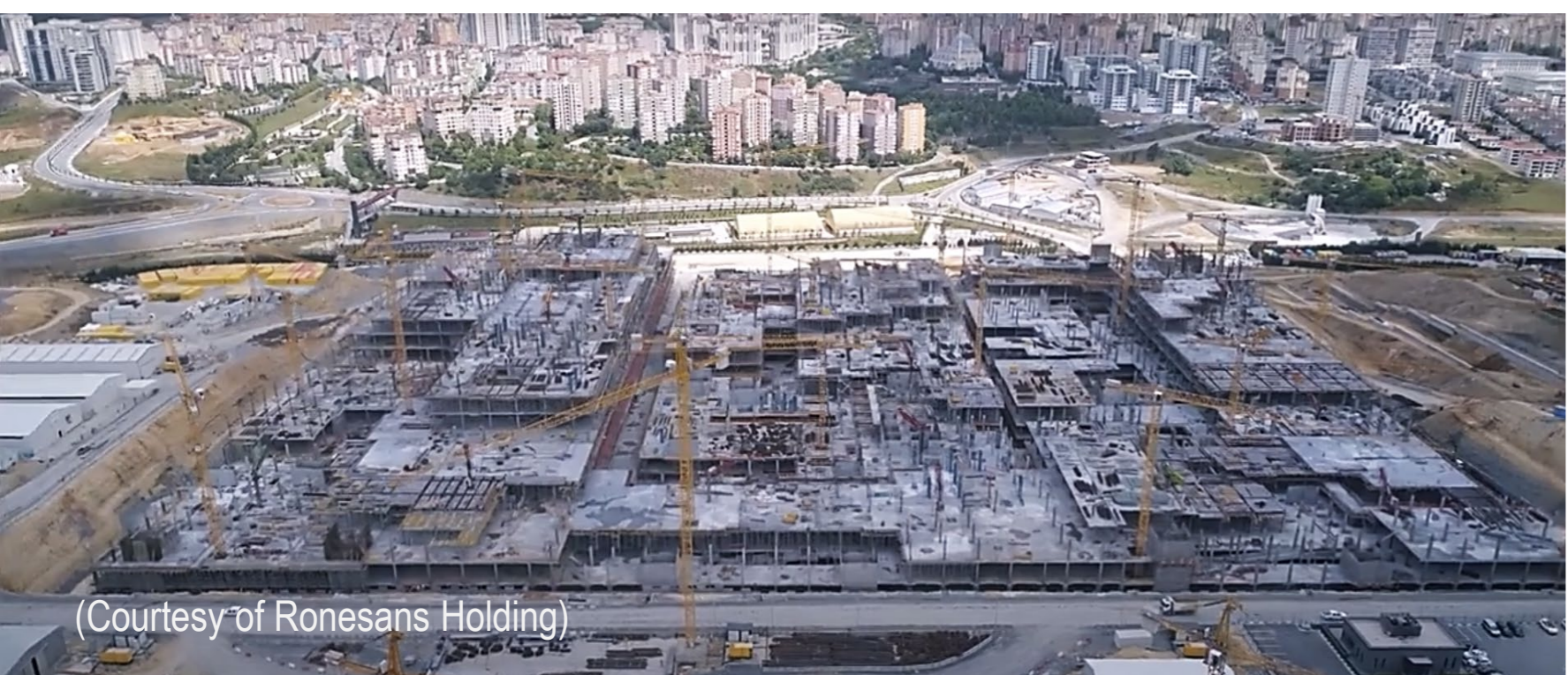
Triple Pendulum™ Isolators Designed for Continued Post-Earthquake Functionality of World's Largest Seismically Isolated Healthcare Facility

(Courtesy of Ronensas Holding)

As the world's largest seismically isolated hospital, this 10,000,000 sqf (1,000,000 m²), US\$1.5-Billion premium healthcare facility with a 2,682-bed capacity services a large part of the Istanbul metropolitan area's population, estimated at 15 million people. The Level-1 hospital facility, adjacent to a critical segment of the North Anatolian fault, is seismically protected through the use of over 2,000 large Triple Pendulum™ isolators with 38 in. (1.0 m) displacement capacity and 5,000 kip (22 MN) bearing capacity, and is designed to remain fully functional following a magnitude 8.0 earthquake. A 5-story, seismically isolated podium with a single perimeter expansion joint supports the hospital's three specialty towers and six low-rise clinical buildings.



Building Schematics (Source: ARUP)



Control of Floor Spectral Accelerations to Limit Seismic Damage of Medical Equipment and Other Nonstructural Components (Source: ARUP)